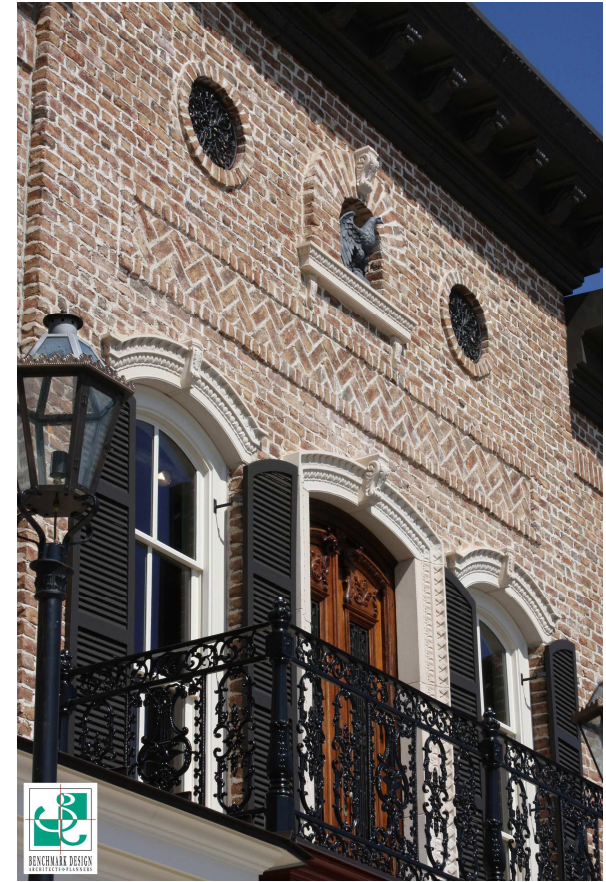


BENCHMARK DESIGN

Classic Urban Architecture



RETAIL / OFFICE / MERCANTILE / EDUCATIONAL / CIVIC / HISTORICAL / URBAN / RESIDENTIAL / MIXED-USE



www.benchmarkdesign.us / info@benchmarkdesign.us / 678-624-0090x303 (attn: Mr. Tracy Ward)

BENCHMARK DESIGN

Classic Urban Architecture

"Our aspiration at Lodestone Development is to bring the past back to life. We incorporate authentic historic architectural elements and details into all of our projects. As one might imagine, inspirational works such as this require a qualified, creative and visionary architect. Benchmark Design, quite simply, embodies these qualities. It has been our pleasure to work with the entire team at Benchmark and would highly recommend them to anyone."

Mr. J.T. Adams, President
Lodestone Development

"Benchmark Design is a talented, creative organization. They have consistently demonstrated an ability to fashion elevations and floor plans that ideally suited the locations, sites, marketing concepts and competitive realities of the markets."

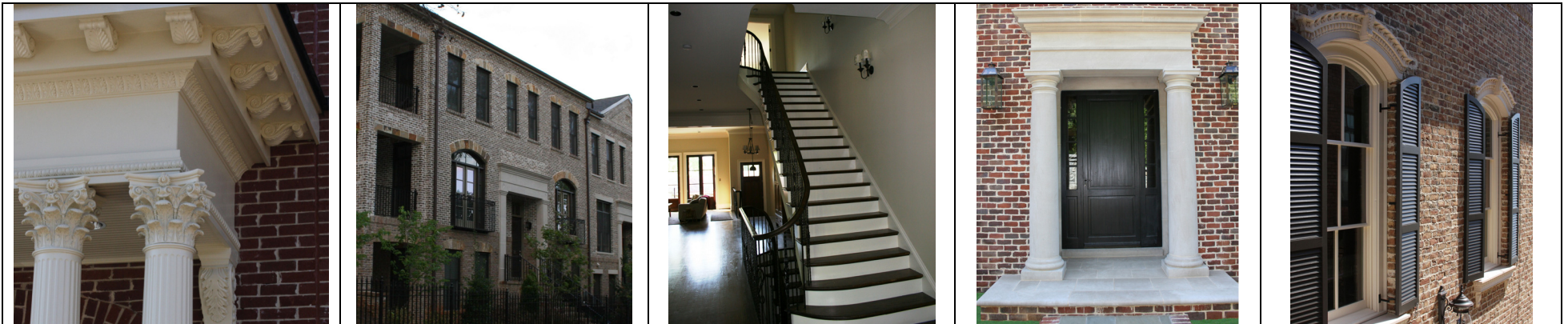
Mr. Al Nash, Partner & Executive Vice-President
The Columns Group

"I am enjoying it (*the design process*) more than I thought. I always want the "push back" and liked how I could brainstorm with all of you. You have an amazing team. You all have been unbelievable."

Mrs. Mary Townsend, Headmaster
The Academy (Alpharetta Methodist Christian Academy)

"Benchmark and Tracy Ward took massive amounts of time with us to design our "dream house". His ability to creatively incorporate everything we wanted in our home made the entire experience a lot of fun. We can honestly say that there isn't a thing we would change with our home and Tracy truly fulfilled our dream of the perfect place to live."

David & Ann-Margaret Johnston



RETAIL / OFFICE / MERCANTILE / EDUCATIONAL / CIVIC / HISTORICAL / URBAN / RESIDENTIAL / MIXED-USE

www.benchmarkdesign.us / info@benchmarkdesign.us / 678-624-0090x303 (attn: Mr. Tracy Ward)